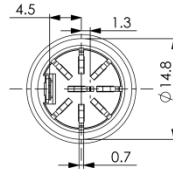
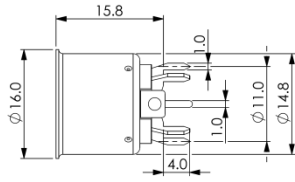
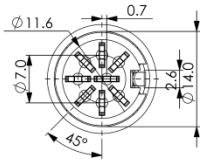
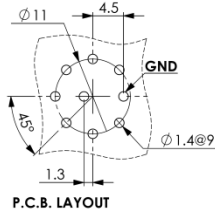


YE-0506 XP DIN SOCKET DIP TYPE



YE-0506 3P	YE-0506 5P	YE-0506 6P	YE-0506 7P	YE-0506 8P

MATERIAL :

1. SHIELD COVER : STEEL NICKEL PTD.
2. GND CONTACT : PHOSPHOR BRONZE
3. HOUSING : PBT+GF15%
4. TERMINALS : BRASS SILVER PTD.

SPECIFICATION :

CONTACT RESISTANCE :

30mΩ max.

INSULATION RESISTANCE :

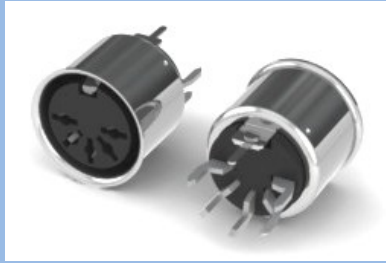
100MΩ min. at 500V DC

WITHSTANDING VOLTAGE :

500V AC for 1 minute



YE-0506 3P



YE-0506 5P



YE-0506 6P



YE-0506 7P



YE-0506 8P